



Under the Office of the President

# **CURRENT STATUS OF HIV IN GHANA**

## **13<sup>TH</sup> INTEREST CONFERENCE**

**14<sup>TH</sup> – 17<sup>TH</sup> MAY, 2019**

**KEMPINSKI HOTEL, ACCRA**

**BY: KYEREMEH ATUAHENE  
GHANA AIDS COMMISSION**



Under the Office of the President

# State of HIV Epidemic in Ghana



Estimated population – 29.5 Million  
 Gross Domestic Product (GDP) – US\$53.3 bil.  
 GDP Per Capita – US\$1,608  
 2018 GDP Growth 8.5%

2018 General population Prevalence  
**1.69%**

2015 FSW Prevalence  
**7%**

2017 MSM Prevalence<sup>1</sup>  
**18.1%**

2018 HIV Population  
**334,713**

2018 New Infections  
**19,931**

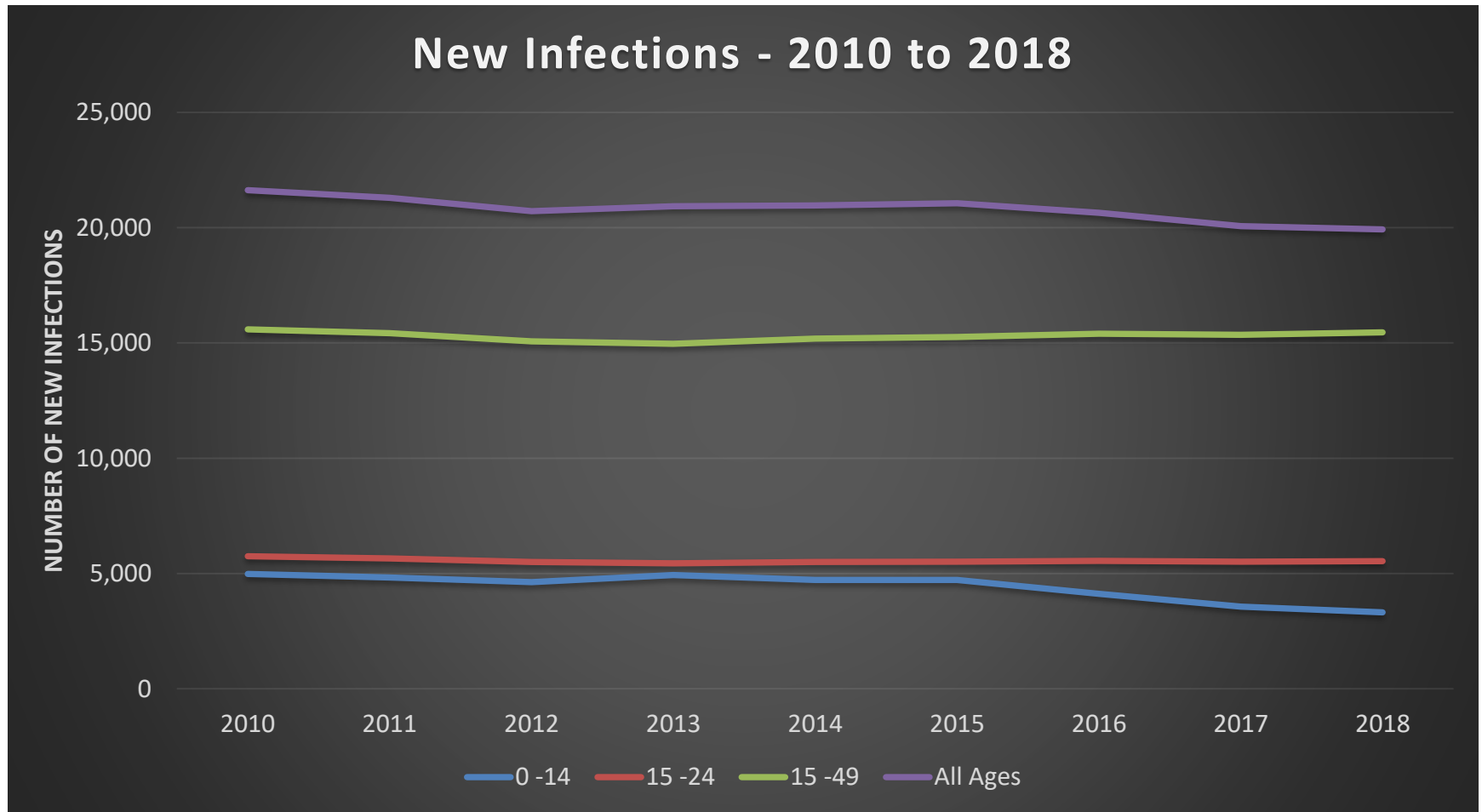
2018 AIDS Related Deaths  
**14,181**



# State of HIV Epidemic in Ghana



Under the Office of the President

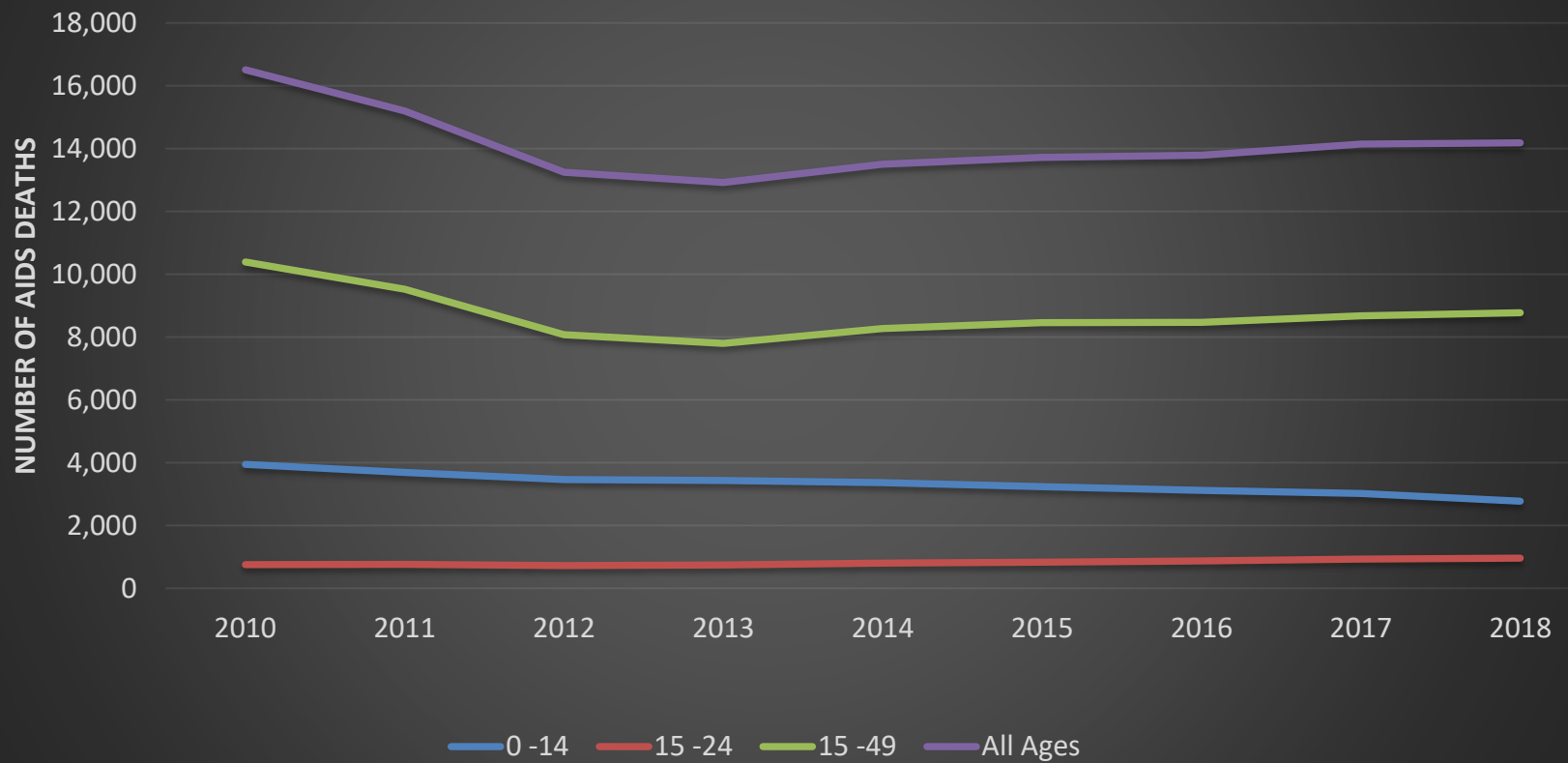


# State of HIV Epidemic in Ghana



Under the Office of the President

## Annual AIDS Deaths - 2010 - 2018

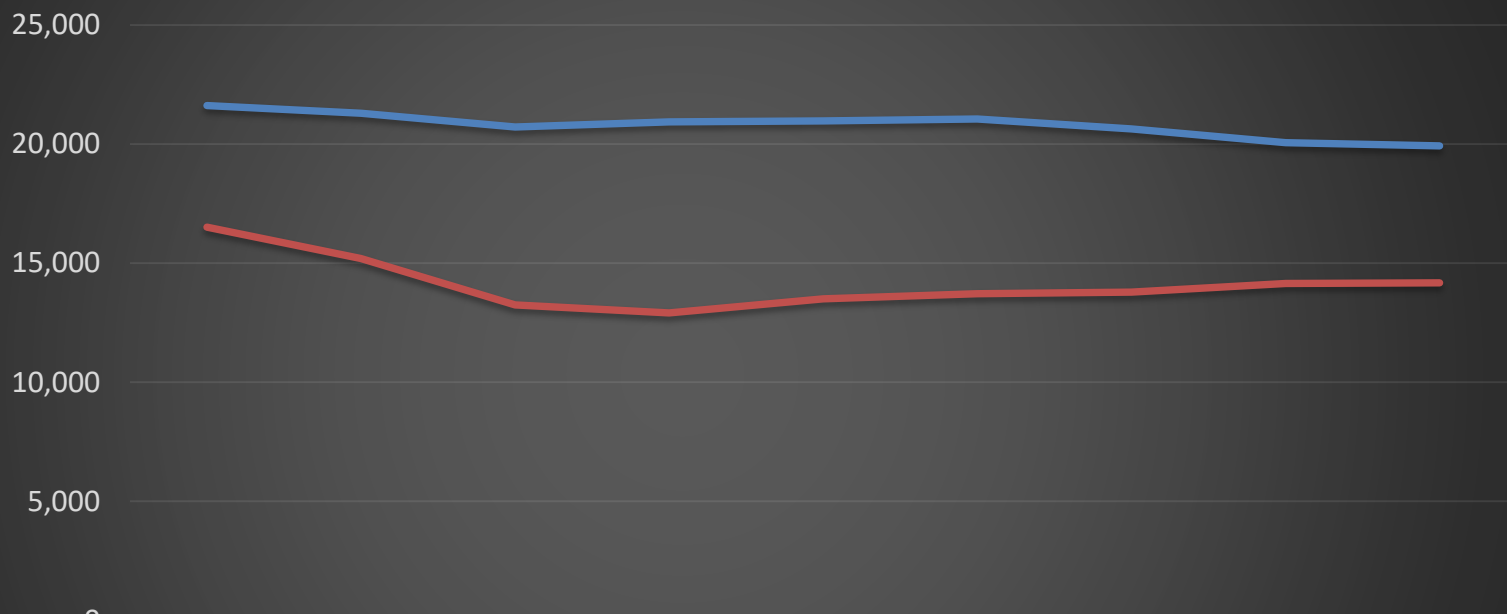


# State of HIV Epidemic in Ghana



Under the Office of the President

## New Infections and AIDS Deaths - 2010 to 2018



	2010	2011	2012	2013	2014	2015	2016	2017	2018
New Infections	21,624	21,294	20,722	20,929	20,970	21,059	20,642	20,062	19,931
AIDS Deaths	16,511	15,201	13,250	12,918	13,505	13,724	13,788	14,148	14,181

— New Infections — AIDS Deaths

# Sources of New HIV Infections



Under the Office of the President

People in casual heterosexual sex & stable heterosexual couples

72.3% in  
2014

58.9% in  
2009

Men who have sex with men

5.4%  
2014

7.9% in  
2009

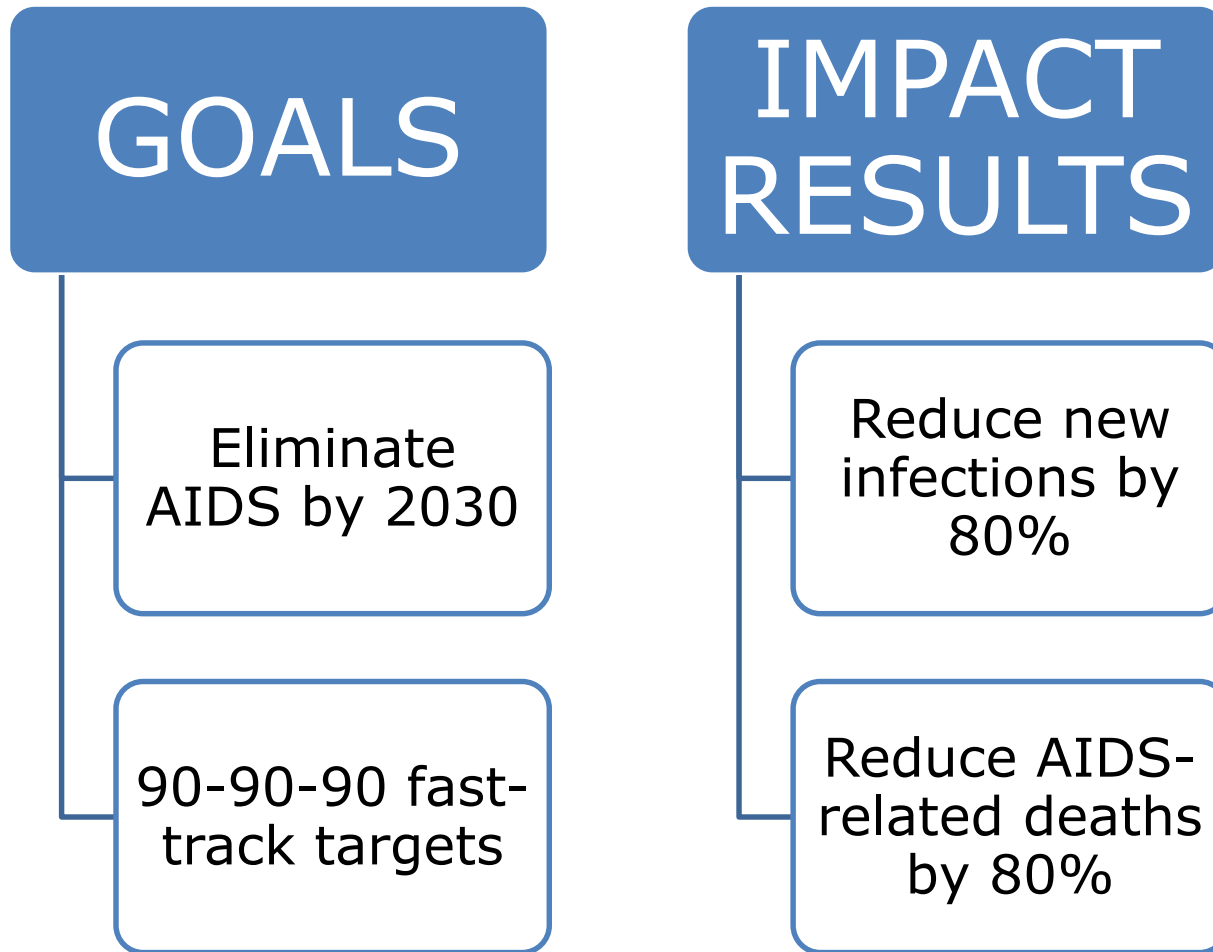
Female Sex Workers

18.5%  
2014

31.1% in  
2009

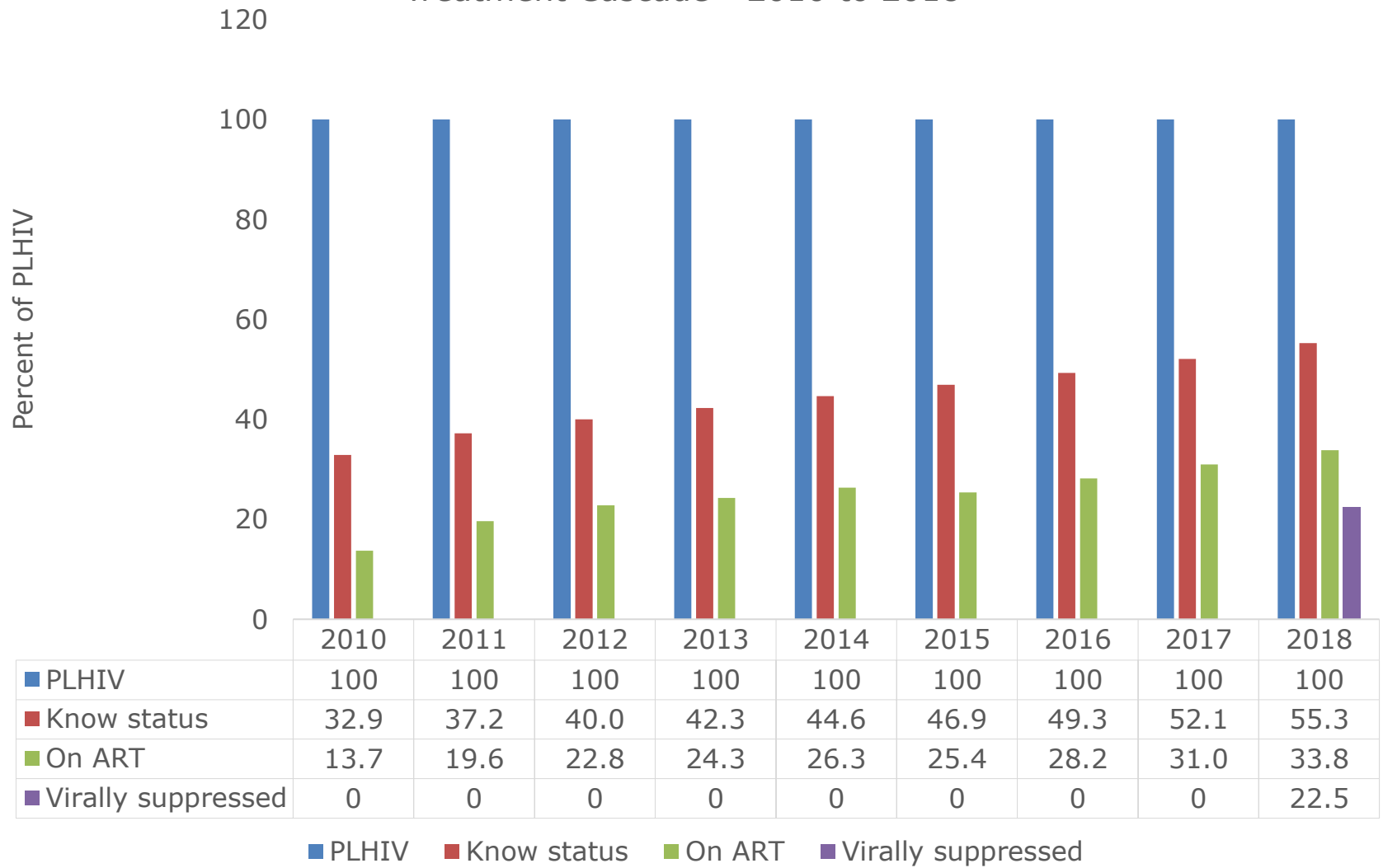


# Goals of National HIV & AIDS Strategic Plan (NSP) 2016-2020





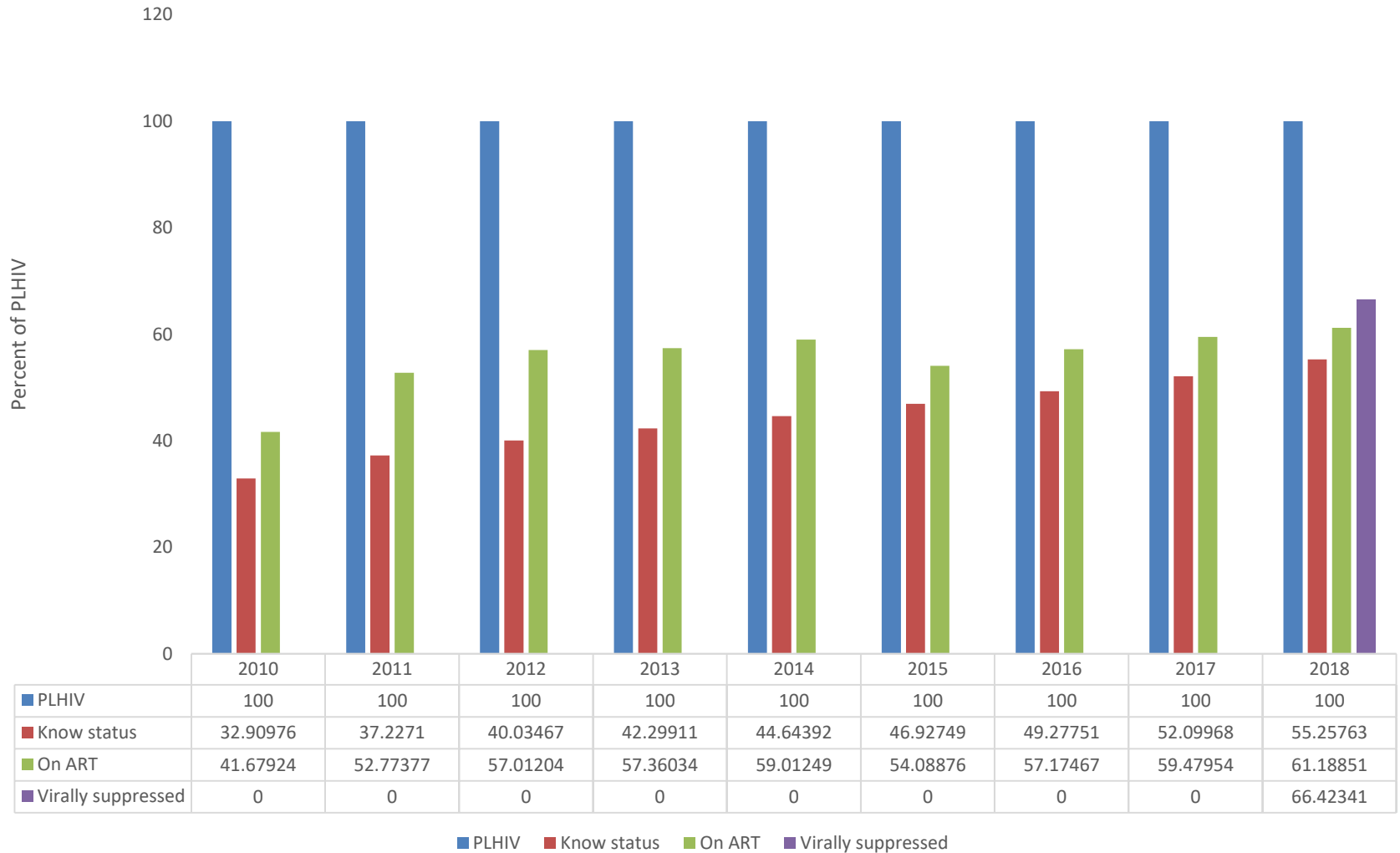
### Treatment Cascade - 2010 to 2018







## Treatment Cascade - 2010 to 2018





Under the Office of the President

**WAY FORWARD:**  
**ACCELERATING**  
**TOWARDS THE**  
**90-90-90 TARGETS**



# Use of Standard Models of Care

## Differentiated Service Delivery Models

HTS and Linkage to Care

- \* 90% HIV+ initiated ART
- \* Same day initiation
- \* Max 10 days lapse

Retention and Adherence

- \* 85% new HIV+ & 95% current HIV+ retained on ART
- \* Weekly reviews/active tracking to reduce LTFU
  - Multi-month scripting
  - 3-6 mo visit (stable HIV+)

Clinical Management & Viral Suppression

- \* 90% HIV+ VL suppressed
  - 12 mo VL test (new HIV+)
  - Adherence counseling

SOPS AND JOB AIDS



## 1<sup>st</sup> 90

- ❖ Family testing
- ❖ Partner notification
- ❖ Pop location strategies
- ❖ Testing of OPD Clients
- ❖ Self-testing

## 2<sup>nd</sup> 90

- ❖ Extent ART to 400 ANC sites
- ❖ Integrate HIV treatment
- ❖ Increase EID coverage & Establish EID Surveillance
- ❖ Strengthen community linkage
  - ❖ Community ART Dist. Points
  - ❖ Adherence clubs
  - ❖ Treatment literacy

## HIV Prevention

- ❖ Combination prevention among
  - ❖ Key Populations
  - ❖ Adolescents and youth
  - ❖ Women
- ❖ PrEP for KPs and discordant couples
- ❖ Condom campaign

## 3<sup>rd</sup> 90

- ❖ Operationalise GenXpert
- ❖ Point of Care tech
- ❖ Active viral load monitoring
- ❖ Patients education



# Conclusion

- ✂ Right policies and programmes are in place
- ✂ Pragmatic measures are being used to reduce new infections & AIDS deaths, rapidly increase coverage- PMTCT, EID, ART
- ✂ Monitoring and evaluation has been strengthened
- ✂ Data quality is being improved
- ✂ Need for stronger collaboration with stakeholders –funding, TA, synergy and accountability

# THANK YOU



**Under the Office of the President**

P. O Box CT 5169  
Cantonments, Accra – Ghana  
Tel: +233 302 919260/ +233 302 919259  
Fax: + 233 302 218 279  
[www.ghanaims.gov.gh](http://www.ghanaims.gov.gh)  
[info@ghanaims.gov.gh](mailto:info@ghanaims.gov.gh)