

Trial design solutions for adolescents

Service Delivery Trials

Jenala Chipungu BA, MPH

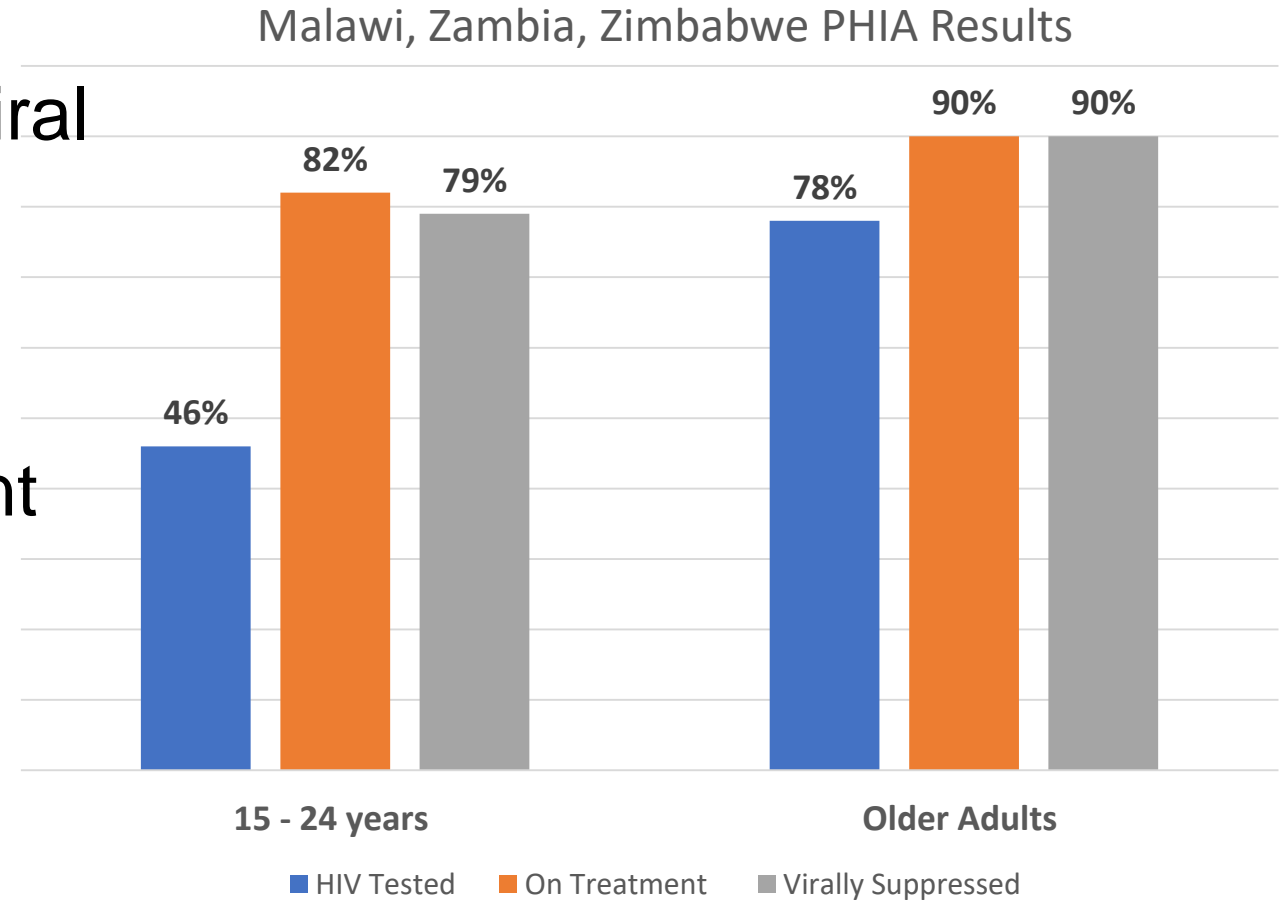
Senior Research Fellow

Overview

1. What are the challenges?
2. What do we know?
3. What are the solutions?

What are the challenges?

- Low uptake of HIV testing, HIV treatment and subsequent poor viral load suppression.
- Absence of implementation guidelines
- Lack of innovation for engagement
- Poor health care transitioning procedures
- Poor health care worker attitude
- Stringent legal and ethical requirements



Wong, V. J., et al, (2017).

There was this time I came for a clinic appointment and later when I got to school my friend asked me what I was doing at the ART section. She pointed out that she had heard my name being called out from the pharmacy to pick ARVs. I felt bad being asked about something I had kept as a secret and considered personal. I got upset and thought to myself that this is not my fault! I then decided I would not go back to pick drugs at the clinic.

Age:

Gender: Female

I was at a boarding school and my mother would send my medication to school. While at boarding, I stopped taking my medicine mainly because I would feel shy to drink medicine as I would always be with friends.

Age: 20

Gender: Male

What do we know?

Very limited evidence existing on service delivery trials and their

The effect of community-based support for caregivers on the risk of virological failure in children and adolescents with HIV in Harare, Zimbabwe (ZENITH): an open-label, randomised controlled trial



Rashida A Ferrand, Victoria Simms, Ethel Dauya, Tsitsi Bandason, Grace Mchugh, Hilda Mujuru, Prosper Chonzi, Joanna Busza, Katharina Kranzer, Shungu Munyati, Helen A Weiss, Richard J Hayes**



Summary

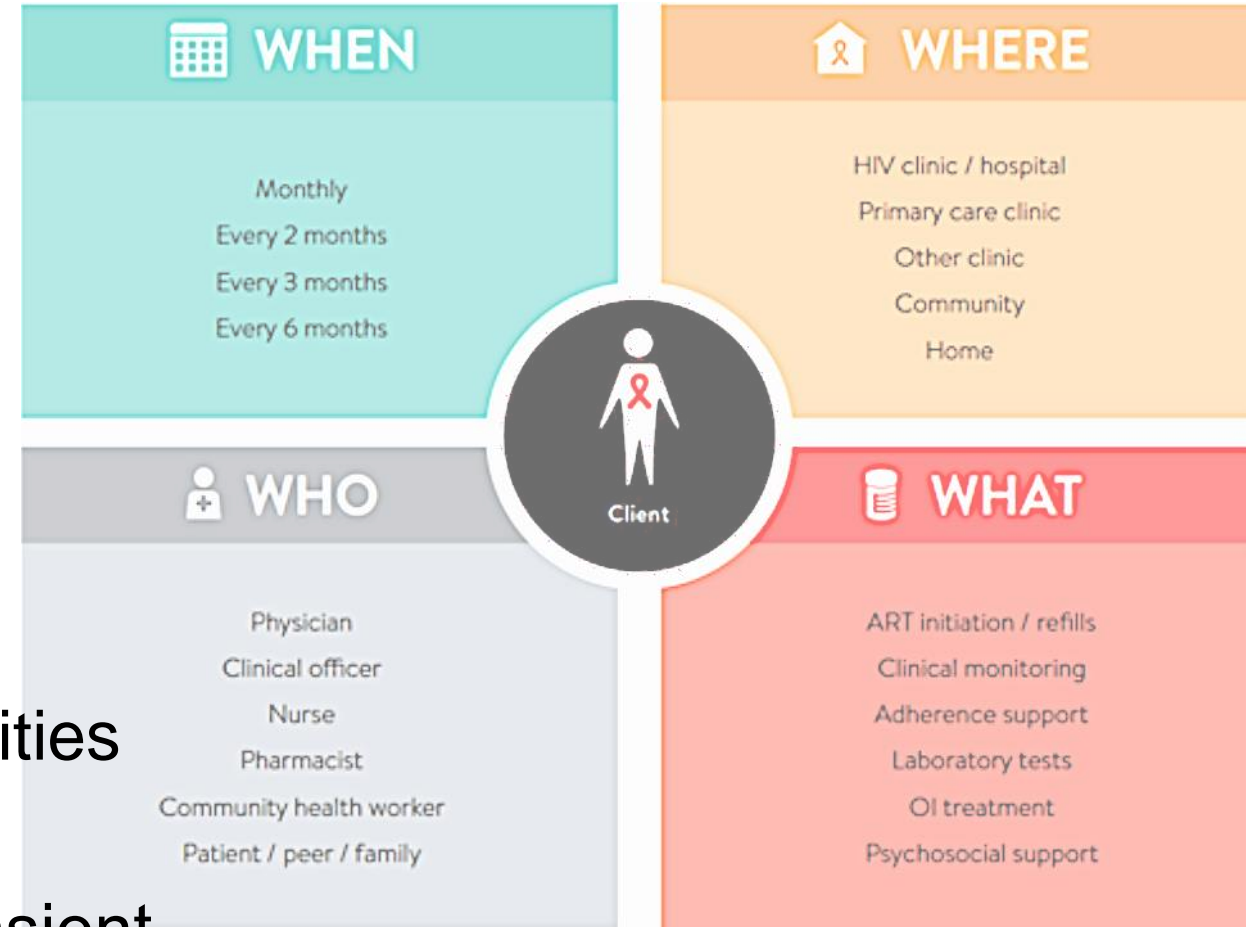
Background Children and adolescents have poorer HIV treatment outcomes than adults. We aimed to assess the effect of community-based support for caregivers of HIV-infected children and adolescents, who are key mediators to children engaging with care, on treatment outcomes.

Lancet Child Adolesc Health 2017;
1: 175–83

Published Online
September 12, 2017

What are the solutions?

- Engagement with ethical boards, health care workers and local authorities
- Comprehensive healthcare transition guidelines
- Adolescent-friendly services, including individual or peer support at the health facilities & in the communities.
- Innovative engagement strategies
- Partnerships between health care facilities and community based organizations
- Flexibility to accommodate clients' transient pressures



WHO, 2018

THANK YOU